

Product Datasheet

ACE-2 Antibody NB100-94421

Unit Size: 0.1 mg

Store at 4C. Do not freeze.

www.novusbio.com



technical@novusbio.com

Protocols, Publications, Related Products, Reviews, Research Tools and Images at:
www.novusbio.com/NB100-94421

Updated 6/27/2018 v.20.1

Earn rewards for product
reviews and publications.

Submit a publication at www.novusbio.com/publications

Submit a review at www.novusbio.com/reviews/destination/NB100-94421



NB100-94421

ACE-2 Antibody

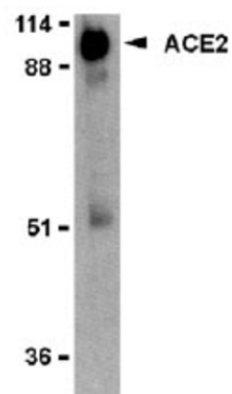
Product Information	
Unit Size	0.1 mg
Concentration	Please see the vial label for concentration. If unlisted please contact technical services.
Storage	Store at 4C. Do not freeze.
Clonality	Polyclonal
Preservative	0.02% Sodium Azide
Purity	IgG purified
Buffer	PBS

Product Description	
Host	Rabbit
Gene ID	59272
Gene Symbol	ACE2
Species	Human
Reactivity Notes	This antibody is reactive against Human
Specificity/Sensitivity	ACE2
Immunogen	Rabbit anti-ACE2 polyclonal antibody was raised against a synthetic peptide corresponding to amino acids near the center of human ACE2 (Genbank accession NP_068576).

Product Application Details	
Applications	Western Blot
Recommended Dilutions	Western Blot 0.5-2 ug/ml
Application Notes	This polyclonal antibody can be used for the detection of ACE2 by Western blot at 0.5 to 2 ug/ml. Human kidney or human testis cell lysate can be used as positive control and a 90 kDa band can be detected. Anti-ACE2 (IN2) is human specific, and has no cross response to ACE1.

Images

It is supplied as immunoaffinity purified IgG, 100 µg in 100 µl of PBS containing 0.02% sodium azide. Store at 4°C, stable for one year. Western blot analysis of ACE2 in human kidney lysate with anti-ACE2 (IN2) at 2 µg/ml.





Novus Biologicals USA

10730 E. Briarwood Avenue
Centennial, CO 80112
USA

Phone: 303.730.1950
Toll Free: 1.888.506.6887
Fax: 303.730.1966
novus@novusbio.com

Novus Biologicals Canada

461 North Service Road West, Unit B37
Oakville, ON L6M 2V5
Canada

Phone: 905.827.6400
Toll Free: 855.668.8722
Fax: 905.827.6402
canada@novusbio.com

Novus Biologicals Europe

19 Barton Lane
Abingdon Science Park
Abingdon, OX14 3NB, United Kingdom

Phone: (44) (0) 1235 529449
Free Phone: 0800 37 34 15
Fax: (44) (0) 1235 533420
info@bio-techne.com

General Contact Information

www.novusbio.com
Technical Support: technical@novusbio.com
Orders: orders@novusbio.com
General: novus@novusbio.com

Limitations

This product is for research use only and is not approved for use in humans or in clinical diagnosis. Primary Antibodies are guaranteed for 1 year from date of receipt.

For more information on our 100% guarantee, please visit www.novusbio.com/guarantee

Earn gift cards/discounts by submitting a review: www.novusbio.com/reviews/submit/NB100-94421

Earn gift cards/discounts by submitting a publication using this product:
www.novusbio.com/publications

