

# Product Datasheet

## PUMA Antibody NB100-94268

Unit Size: 0.1 mg

Store at 4C. Do not freeze.

[www.novusbio.com](http://www.novusbio.com)



[technical@novusbio.com](mailto:technical@novusbio.com)

Protocols, Publications, Related Products, Reviews, Research Tools and Images at:  
[www.novusbio.com/NB100-94268](http://www.novusbio.com/NB100-94268)

Updated 6/27/2018 v.20.1

Earn rewards for product  
reviews and publications.

Submit a publication at [www.novusbio.com/publications](http://www.novusbio.com/publications)

Submit a review at [www.novusbio.com/reviews/destination/NB100-94268](http://www.novusbio.com/reviews/destination/NB100-94268)



**NB100-94268****PUMA Antibody****Product Information**

<b>Unit Size</b>	0.1 mg
<b>Concentration</b>	Please see the vial label for concentration. If unlisted please contact technical services.
<b>Storage</b>	Store at 4C. Do not freeze.
<b>Clonality</b>	Polyclonal
<b>Preservative</b>	0.02% Sodium Azide
<b>Purity</b>	IgG purified
<b>Buffer</b>	PBS

**Product Description**

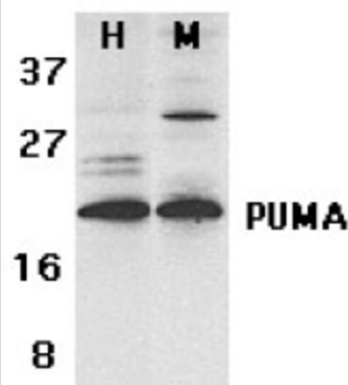
<b>Host</b>	Rabbit
<b>Gene ID</b>	27113
<b>Gene Symbol</b>	BBC3
<b>Species</b>	Human, Mouse
<b>Reactivity Notes</b>	This antibody is reactive against Human, Mouse
<b>Specificity/Sensitivity</b>	PUMA bbc3
<b>Immunogen</b>	Rabbit anti-PUMA polyclonal antibody was raised against a synthetic peptide (PLPRGHRAPEMEPN) corresponding to amino acids 180 to 193 of human PUMA-alpha (1). This sequence is identical between alpha and beta forms of the PUMA proteins.

**Product Application Details**

<b>Applications</b>	Western Blot
<b>Recommended Dilutions</b>	Western Blot 1-2 ug/ml
<b>Application Notes</b>	This antibody can be used for detection of PUMA by Western blot at 1 to 2 ug/ml. K562 or 3T3 cell lysate can be used as a positive control and a band at approximately 23 kDa can be detected. A lower band at approximately 16 kDa was detected in MOLT4 and U937 cells, which may represent the PUMA-b form. It is human and mouse reactive.

**Images**

Western Blot: PUMA bbc3 Antibody [NB100-94268] - Western blot analysis of PUMA expression in human (H) K562 and mouse (M) 3T3 cell lysates with anti-PUMA at 2 ug/ml.





### **Novus Biologicals USA**

10730 E. Briarwood Avenue  
Centennial, CO 80112  
USA  
Phone: 303.730.1950  
Toll Free: 1.888.506.6887  
Fax: 303.730.1966  
novus@novusbio.com

### **Novus Biologicals Canada**

461 North Service Road West, Unit B37  
Oakville, ON L6M 2V5  
Canada  
Phone: 905.827.6400  
Toll Free: 855.668.8722  
Fax: 905.827.6402  
canada@novusbio.com

### **Novus Biologicals Europe**

19 Barton Lane  
Abingdon Science Park  
Abingdon, OX14 3NB, United Kingdom  
Phone: (44) (0) 1235 529449  
Free Phone: 0800 37 34 15  
Fax: (44) (0) 1235 533420  
info@bio-techne.com

### **General Contact Information**

www.novusbio.com  
Technical Support: technical@novusbio.com  
Orders: orders@novusbio.com  
General: novus@novusbio.com

### **Limitations**

This product is for research use only and is not approved for use in humans or in clinical diagnosis. Primary Antibodies are guaranteed for 1 year from date of receipt.

For more information on our 100% guarantee, please visit [www.novusbio.com/guarantee](http://www.novusbio.com/guarantee)

Earn gift cards/discounts by submitting a review: [www.novusbio.com/reviews/submit/NB100-94268](http://www.novusbio.com/reviews/submit/NB100-94268)

Earn gift cards/discounts by submitting a publication using this product:  
[www.novusbio.com/publications](http://www.novusbio.com/publications)

