

# Product Datasheet

## Bcl-2 Antibody NB100-81809

Unit Size: 0.1 mg

Aliquot and store at -20C or -80C. Avoid freeze-thaw cycles.

[www.novusbio.com](http://www.novusbio.com)



[technical@novusbio.com](mailto:technical@novusbio.com)

Protocols, Publications, Related Products, Reviews, Research Tools and Images at:  
[www.novusbio.com/NB100-81809](http://www.novusbio.com/NB100-81809)

Updated 6/27/2018 v.20.1

Earn rewards for product  
reviews and publications.

Submit a publication at [www.novusbio.com/publications](http://www.novusbio.com/publications)

Submit a review at [www.novusbio.com/reviews/destination/NB100-81809](http://www.novusbio.com/reviews/destination/NB100-81809)



**NB100-81809**

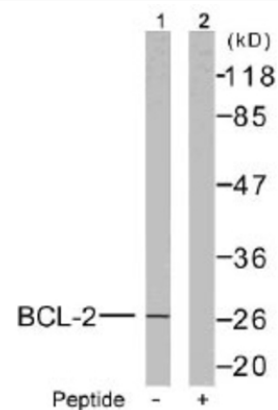
Bcl-2 Antibody

Product Information	
<b>Unit Size</b>	0.1 mg
<b>Concentration</b>	1.0 mg/ml
<b>Storage</b>	Aliquot and store at -20C or -80C. Avoid freeze-thaw cycles.
<b>Clonality</b>	Polyclonal
<b>Preservative</b>	0.02% Sodium Azide
<b>Purity</b>	Immunogen affinity purified
<b>Buffer</b>	phosphate buffered saline (without Mg <sup>2+</sup> and Ca <sup>2+</sup> ), pH 7.4, 150mM NaCl, and 50% glycerol.
Product Description	
<b>Host</b>	Rabbit
<b>Gene ID</b>	596
<b>Gene Symbol</b>	BCL2
<b>Species</b>	Human
<b>Reactivity Notes</b>	Human
<b>Specificity/Sensitivity</b>	BCL-2 (specific to a.a. 56) detects endogenous levels of total BCL-2 protein.
<b>Immunogen</b>	The antiserum was produced against synthesized non-phosphopeptide derived from human BCL-2 around the phosphorylation site of threonine 56 (G-H-TP-P-H).
Product Application Details	
<b>Applications</b>	Western Blot, Immunocytochemistry/Immunofluorescence, Immunohistochemistry, Immunohistochemistry-Paraffin
<b>Recommended Dilutions</b>	Western Blot 1:500-1:1000, Immunohistochemistry, Immunocytochemistry/Immunofluorescence 1:100-1:200, Immunohistochemistry-Paraffin

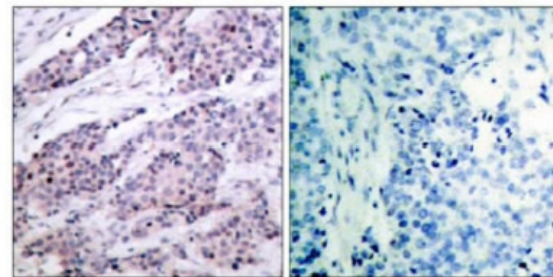


## Images

Western Blot: BCL-2 Antibody [NB100-81809] - Western blot analysis of extracts from MCF7 cells treated with etoposide using BCL-2(Ab-56) antibody.



Immunohistochemistry: BCL-2 Antibody [NB100-81809] - Immunohistochemical analysis of paraffin- embedded human breast carcinoma tissue using BCL-2(Ab-56) antibody.



Peptide - +



### **Novus Biologicals USA**

10730 E. Briarwood Avenue  
Centennial, CO 80112  
USA

Phone: 303.730.1950  
Toll Free: 1.888.506.6887  
Fax: 303.730.1966  
novus@novusbio.com

### **Novus Biologicals Canada**

461 North Service Road West, Unit B37  
Oakville, ON L6M 2V5  
Canada

Phone: 905.827.6400  
Toll Free: 855.668.8722  
Fax: 905.827.6402  
canada@novusbio.com

### **Novus Biologicals Europe**

19 Barton Lane  
Abingdon Science Park  
Abingdon, OX14 3NB, United Kingdom

Phone: (44) (0) 1235 529449  
Free Phone: 0800 37 34 15  
Fax: (44) (0) 1235 533420  
info@bio-techne.com

### **General Contact Information**

www.novusbio.com  
Technical Support: technical@novusbio.com  
Orders: orders@novusbio.com  
General: novus@novusbio.com

### **Limitations**

This product is for research use only and is not approved for use in humans or in clinical diagnosis. Primary Antibodies are guaranteed for 1 year from date of receipt.

For more information on our 100% guarantee, please visit [www.novusbio.com/guarantee](http://www.novusbio.com/guarantee)

Earn gift cards/discounts by submitting a review: [www.novusbio.com/reviews/submit/NB100-81809](http://www.novusbio.com/reviews/submit/NB100-81809)

Earn gift cards/discounts by submitting a publication using this product:  
[www.novusbio.com/publications](http://www.novusbio.com/publications)

