

Product Datasheet

Dopamine D1R/DRD1 Antibody (EP1560Y) NB100-79930

Unit Size: 0.1 ml

Store at -20C. Avoid freeze-thaw cycles.

www.novusbio.com



technical@novusbio.com

Publications: 1

Protocols, Publications, Related Products, Reviews, Research Tools and Images at:
www.novusbio.com/NB100-79930

Updated 4/16/2019 v.20.1

Earn rewards for product
reviews and publications.

Submit a publication at www.novusbio.com/publications

Submit a review at www.novusbio.com/reviews/destination/NB100-79930



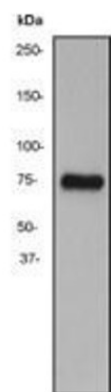
NB100-79930

Dopamine D1R/DRD1 Antibody (EP1560Y)

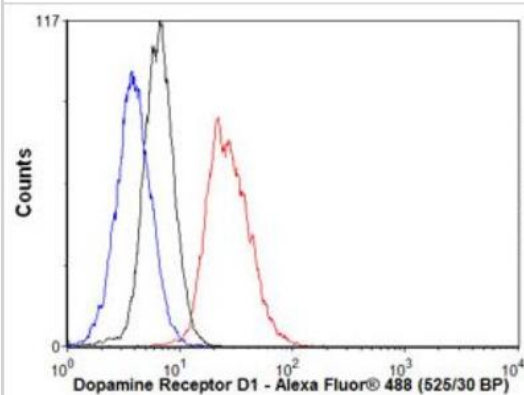
Product Information	
Unit Size	0.1 ml
Concentration	Please see the vial label for concentration. If unlisted please contact technical services.
Storage	Store at -20C. Avoid freeze-thaw cycles.
Clonality	Monoclonal
Clone	EP1560Y
Preservative	0.01% Sodium Azide
Isotype	IgG
Purity	Protein A or G purified
Buffer	0.05% BSA and 50% Glycerol, pH 7.4
Product Description	
Host	Rabbit
Gene ID	1812
Gene Symbol	DRD1
Species	Human, Mouse, Rat, Guinea Pig
Reactivity Notes	Guinea Pig reactivity reported in scientific literature (PMID: 24004608)
Immunogen	A synthetic peptide corresponding to the C-terminal of human D(1A) dopamine receptor protein was used as an immunogen.
Notes	Produced using Abcam's RabMab® technology. RabMab® technology is covered by the following U.S. Patents, No. 5,675,063 and/or 7,429,487.
Product Application Details	
Applications	Western Blot, Flow Cytometry, Immunocytochemistry/Immunofluorescence
Recommended Dilutions	Western Blot 1:1000-10000, Flow Cytometry 1:85, Immunocytochemistry/Immunofluorescence 1:10-1:2000
Application Notes	In Western blot this antibody detects a band at approximately 75 kDa. Immunocytochemistry (PMID: 21911005)

Images

Western Blot: Dopamine Receptor D1 Antibody (EP1560Y) [NB100-79930] SH-SY5Y cell lysate.



Flow Cytometry: Dopamine Receptor D1 Antibody (EP1560Y) [NB100-79930] - Overlay histogram showing SH-SY5Y cells stained with (red line).



Publications

Guez-Barber D, Fanous S, Harvey BK et al. FACS purification of immunolabeled cell types from adult rat brain. *J Neurosci Methods*. 2011 Sep 3. [PMID: 21911005]



Novus Biologicals USA

10730 E. Briarwood Avenue
Centennial, CO 80112
USA

Phone: 303.730.1950
Toll Free: 1.888.506.6887
Fax: 303.730.1966
novus@novusbio.com

Novus Biologicals Canada

461 North Service Road West, Unit B37
Oakville, ON L6M 2V5
Canada

Phone: 905.827.6400
Toll Free: 855.668.8722
Fax: 905.827.6402
canada@novusbio.com

Novus Biologicals Europe

19 Barton Lane
Abingdon Science Park
Abingdon, OX14 3NB, United Kingdom

Phone: (44) (0) 1235 529449
Free Phone: 0800 37 34 15
Fax: (44) (0) 1235 533420
info@bio-techne.com

General Contact Information

www.novusbio.com
Technical Support: technical@novusbio.com
Orders: orders@novusbio.com
General: novus@novusbio.com

Limitations

This product is for research use only and is not approved for use in humans or in clinical diagnosis. Primary Antibodies are guaranteed for 1 year from date of receipt.

For more information on our 100% guarantee, please visit www.novusbio.com/guarantee

Earn gift cards/discounts by submitting a review: www.novusbio.com/reviews/submit/NB100-79930

Earn gift cards/discounts by submitting a publication using this product:
www.novusbio.com/publications

