

# Product Datasheet

## NKCC1/SLC12A2 Antibody

### NB100-75624

Unit Size: 0.05 mg

Store at 4C short term. Aliquot and store at -20C long term. Avoid freeze-thaw cycles.

[www.novusbio.com](http://www.novusbio.com)



[technical@novusbio.com](mailto:technical@novusbio.com)

Protocols, Publications, Related Products, Reviews, Research Tools and Images at:  
[www.novusbio.com/NB100-75624](http://www.novusbio.com/NB100-75624)

Updated 6/27/2018 v.20.1

Earn rewards for product  
reviews and publications.

Submit a publication at [www.novusbio.com/publications](http://www.novusbio.com/publications)

Submit a review at [www.novusbio.com/reviews/destination/NB100-75624](http://www.novusbio.com/reviews/destination/NB100-75624)



**NB100-75624****NKCC1/SLC12A2 Antibody**

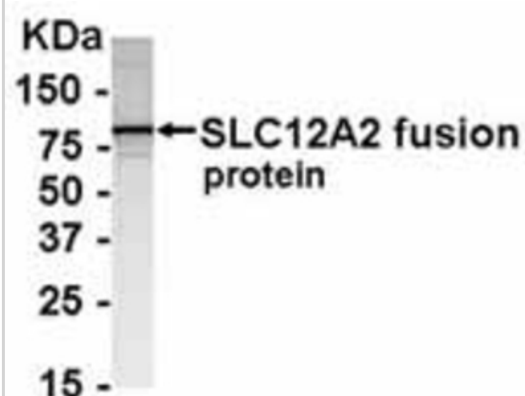
<b>Product Information</b>	
<b>Unit Size</b>	0.05 mg
<b>Concentration</b>	Please see the vial label for concentration. If unlisted please contact technical services.
<b>Storage</b>	Store at 4C short term. Aliquot and store at -20C long term. Avoid freeze-thaw cycles.
<b>Clonality</b>	Polyclonal
<b>Preservative</b>	No Preservative
<b>Purity</b>	Immunogen affinity purified
<b>Buffer</b>	PBS

<b>Product Description</b>	
<b>Host</b>	Chicken
<b>Gene ID</b>	6558
<b>Gene Symbol</b>	SLC12A2
<b>Species</b>	Human, Mouse, Canine, Primate
<b>Reactivity Notes</b>	This antibody is reactive against Human, chimpanzee, dog, mouse.
<b>Specificity/Sensitivity</b>	NKCC1
<b>Immunogen</b>	The immunogen for this antibody was a sequence from 114a.a. to 285a.a. from NKCC1(a 1212a.a. long protein)

<b>Product Application Details</b>	
<b>Applications</b>	Western Blot
<b>Recommended Dilutions</b>	Western Blot
<b>Application Notes</b>	Western Blot: E coli-derived fusion protein as test antigen. Affinity-purified IgY dilution: 1:2000. Goat anti-IgY-HRP dilution: 1:1000. Colorimetric method for signal development.

**Images**

Western Blot: E coli-derived fusion protein as test antigen. Affinity-purified IgY dilution: 1:2000, Goat anti-IgY-HRP dilution: 1:1000. Colorimetric method for signal development. ( anti-SLC12A2





### **Novus Biologicals USA**

10730 E. Briarwood Avenue  
Centennial, CO 80112  
USA

Phone: 303.730.1950  
Toll Free: 1.888.506.6887  
Fax: 303.730.1966  
novus@novusbio.com

### **Novus Biologicals Canada**

461 North Service Road West, Unit B37  
Oakville, ON L6M 2V5  
Canada

Phone: 905.827.6400  
Toll Free: 855.668.8722  
Fax: 905.827.6402  
canada@novusbio.com

### **Novus Biologicals Europe**

19 Barton Lane  
Abingdon Science Park  
Abingdon, OX14 3NB, United Kingdom

Phone: (44) (0) 1235 529449  
Free Phone: 0800 37 34 15  
Fax: (44) (0) 1235 533420  
info@bio-techne.com

### **General Contact Information**

www.novusbio.com  
Technical Support: technical@novusbio.com  
Orders: orders@novusbio.com  
General: novus@novusbio.com

### **Limitations**

This product is for research use only and is not approved for use in humans or in clinical diagnosis. Primary Antibodies are guaranteed for 1 year from date of receipt.

For more information on our 100% guarantee, please visit [www.novusbio.com/guarantee](http://www.novusbio.com/guarantee)

Earn gift cards/discounts by submitting a review: [www.novusbio.com/reviews/submit/NB100-75624](http://www.novusbio.com/reviews/submit/NB100-75624)

Earn gift cards/discounts by submitting a publication using this product:  
[www.novusbio.com/publications](http://www.novusbio.com/publications)

