

# Product Datasheet

## EGF Antibody 26610002

Unit Size: 0.05 mg

Store at 4C short term. Aliquot and store at -20C long term. Avoid freeze-thaw cycles.

[www.novusbio.com](http://www.novusbio.com)



[technical@novusbio.com](mailto:technical@novusbio.com)

### Publications: 2

Protocols, Publications, Related Products, Reviews, Research Tools and Images at:  
[www.novusbio.com/26610002](http://www.novusbio.com/26610002)

Updated 8/21/2017 v.20.1

Earn rewards for product  
reviews and publications.

Submit a publication at [www.novusbio.com/publications](http://www.novusbio.com/publications)

Submit a review at [www.novusbio.com/reviews/destination/26610002](http://www.novusbio.com/reviews/destination/26610002)



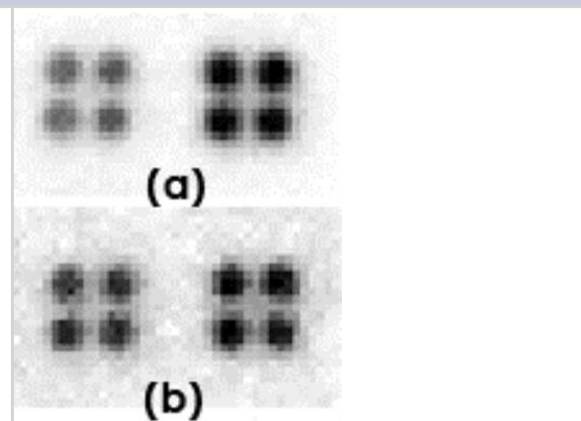
**26610002**

## EGF Antibody

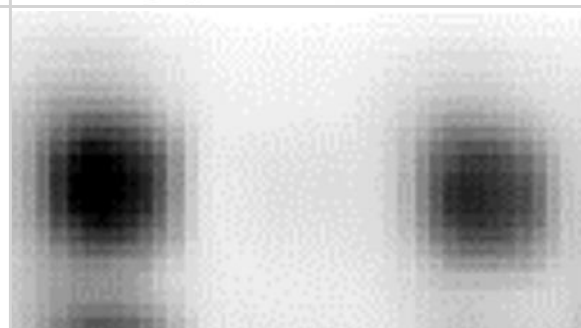
Product Information	
<b>Unit Size</b>	0.05 mg
<b>Concentration</b>	Please see the vial label for concentration. If unlisted please contact technical services.
<b>Storage</b>	Store at 4C short term. Aliquot and store at -20C long term. Avoid freeze-thaw cycles.
<b>Clonality</b>	Polyclonal
<b>Preservative</b>	No Preservative
<b>Isotype</b>	IgG
<b>Purity</b>	Immunogen affinity purified
<b>Buffer</b>	20mM Potassium Phosphate (pH 7.0) and 0.15M NaCl
Product Description	
<b>Host</b>	Rabbit
<b>Gene ID</b>	1950
<b>Gene Symbol</b>	EGF
<b>Species</b>	Human
<b>Reactivity Notes</b>	Human.
<b>Specificity/Sensitivity</b>	This product is specific for Human EGF.
<b>Immunogen</b>	This antibody is specific for the C Terminus Region of the target protein.
<b>Notes</b>	Manufactured by SDIX's proprietary Genomic Antibody Technology™; GAT <a href="#">FAQs</a> .
Product Application Details	
<b>Applications</b>	Dot Blot, ELISA, Immunohistochemistry, Immunohistochemistry-Paraffin
<b>Recommended Dilutions</b>	ELISA 1:100-1:2000, Immunohistochemistry 1:10-1:500, Immunohistochemistry-Paraffin 1:250-1:2000, Dot Blot 1:100-1:2000
<b>Application Notes</b>	This antibody is useful in Dot Blot, ELISA and Immunohistochemistry-Paraffin.

## Images

Dot Blot: EGF Antibody [26610002] - The anti-EGF antibody (left quadruplicate spots at each panel) or control antibody (right quadruplicate spots at each panel) were printed on membranes at 10 ng/spot. The membranes were incubated with biotinylated cell lysate (50 ug per membrane), followed by probing with streptavidin-HRP and CCD camera image acquisition. (a), Cell lysate from Jurkat cells; (b), Cell lysate from 293T cells. Data courtesy of a SDI customer.

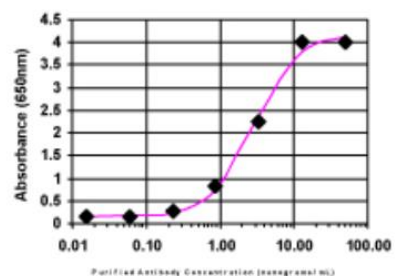


Dot Blot: EGF Antibody [26610002] - Protein samples (left spot: 293T cell lysate; right spot: Jurkat cell lysate) were printed on membranes at 40 ng/spot. The membrane was incubated with anti-EGF antibody (1:4000 dilution) and then probed anti-rabbit IgG-HRP. Signals were acquired with a CCD camera. Data courtesy of a SDI customer.



ELISA: EGF Antibody [26610002]

ELISA:



The affinity purified antibody was serially diluted onto an ELISA plate coated with a recombinant protein fragment.

## Publications

Garrison C, Lastwika K, Zhang Y et al. Proteomic Analysis, Immune Dysregulation and Pathway Interconnections with Obesity. *Journal of Proteome Research* Oct 21 2016 12:00AM [PMID: 27769113] (MiAr)

Details:  
EGF Antibody used in microarray creation

Rho JH, Lampe PD. High-throughput screening for native autoantigen-autoantibody complexes using antibody microarrays. *Journal of Proteome Research* May 3 2014 12:00AM [PMID: 23541305] (MiAr)

Details:  
Anti-EGF used in screening array



### **Novus Biologicals USA**

8100 Southpark Way, A-8  
Littleton, CO 80120  
USA

Phone: 303.730.1950  
Toll Free: 1.888.506.6887  
Fax: 303.730.1966  
novus@novusbio.com

### **Novus Biologicals Canada**

461 North Service Road West, Unit B37  
Oakville, ON L6M 2V5  
Canada

Phone: 905.827.6400  
Toll Free: 855.668.8722  
Fax: 905.827.6402  
canada@novusbio.com

### **Novus Biologicals Europe**

19 Barton Lane  
Abingdon Science Park  
Abingdon, OX14 3NB, United Kingdom  
Phone: (44) (0) 1235 529449  
Free Phone: 0800 37 34 15  
Fax: (44) (0) 1235 533420  
info@bio-techne.com

### **General Contact Information**

www.novusbio.com  
Technical Support: technical@novusbio.com  
Orders: orders@novusbio.com  
General: novus@novusbio.com

### **Limitations**

This product is for research use only and is not approved for use in humans or in clinical diagnosis. Primary Antibodies are guaranteed for 1 year from date of receipt.

For more information on our 100% guarantee, please visit [www.novusbio.com/guarantee](http://www.novusbio.com/guarantee)

Earn gift cards/discounts by submitting a review: [www.novusbio.com/reviews/submit/26610002](http://www.novusbio.com/reviews/submit/26610002)

Earn gift cards/discounts by submitting a publication using this product:  
[www.novusbio.com/publications](http://www.novusbio.com/publications)

