

# Product Datasheet

## IMP2/IGF2BP2 Antibody 23750002

Unit Size: 0.05 mg

Store at 4C short term. Aliquot and store at -20C long term. Avoid freeze-thaw cycles.

[www.novusbio.com](http://www.novusbio.com)



[technical@novusbio.com](mailto:technical@novusbio.com)

### Publications: 2

Protocols, Publications, Related Products, Reviews, Research Tools and Images at:  
[www.novusbio.com/23750002](http://www.novusbio.com/23750002)

Updated 8/21/2017 v.20.1

Earn rewards for product  
reviews and publications.

Submit a publication at [www.novusbio.com/publications](http://www.novusbio.com/publications)

Submit a review at [www.novusbio.com/reviews/destination/23750002](http://www.novusbio.com/reviews/destination/23750002)



**23750002**

## IMP2/IGF2BP2 Antibody

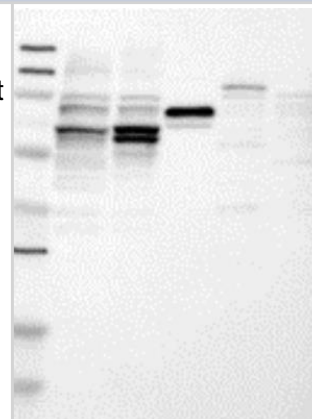
Product Information	
Unit Size	0.05 mg
Concentration	Please see the vial label for concentration. If unlisted please contact technical services.
Storage	Store at 4C short term. Aliquot and store at -20C long term. Avoid freeze-thaw cycles.
Clonality	Polyclonal
Preservative	No Preservative
Isotype	IgG
Purity	Immunogen affinity purified
Buffer	20mM Potassium Phosphate (pH 7.0) and 0.15M NaCl

Product Description	
Host	Rabbit
Gene ID	10644
Gene Symbol	IGF2BP2
Species	Human
Reactivity Notes	Human.
Specificity/Sensitivity	This product is specific for Human IGF2BP2.
Immunogen	This antibody is specific for the N Terminus Region of the target protein.
Notes	Manufactured by SDIX's proprietary Genomic Antibody Technology™; GAT <a href="#">FAQs</a> .

Product Application Details	
Applications	Western Blot, ELISA, Immunohistochemistry, Immunohistochemistry-Paraffin
Recommended Dilutions	Western Blot 1:5000-1:20000, ELISA 1:100-1:2000, Immunohistochemistry 1:10-1:500, Immunohistochemistry-Paraffin 1:250-1:2000
Application Notes	This antibody is useful in ELISA, Immunohistochemistry-Paraffin and Western Blot.

## Images

Western Blot: IMP2/IGF2BP2 Antibody [23750002] - Samples: Lane 1, Marker [kDa]: 250, 130, 95, 72, 55, 36, 28, 17, 11 Lane 2, RT-4 Lane 3, U-251MG sp Lane 4, Human Plasma Lane 5, Liver Lane 6, Tonsil Target weight [kDa]: 66, 62 (splice variants) Validation score: 2 Validation description: Supportive - Band of predicted size in kDa (+/-20%) with additional bands present.

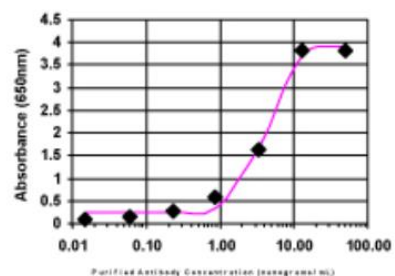


Immunohistochemistry: IMP2/IGF2BP2 Antibody [23750002] - Both normal and malignant tissues showed moderate to strong cytoplasmic staining. In normal tissues, surface epithelial cells of bronchus, glandular cells of the intestine, endometrium and cervix, and trophoblastic cells displayed strong cytoplasmic staining. Pancreas, surface epithelial cells of oral mucosa, vagina and cervix, non-neuronal cells of CNS tissues and lymphoid tissues were negative. Colo-rectal, skin and testis carcinomas exhibited strong cytoplasmic staining while ovarian, stomach and pancreas malignancies displayed moderate to strong cytoplasmic staining. Malignant carcinoids showed weak cytoplasmic and nuclear staining. Renal and prostate malignancies were weak to negative. Image and statement courtesy of the Human Protein Atlas (HPA).



ELISA: IMP2/IGF2BP2 Antibody [23750002]

ELISA:



The affinity purified antibody was serially diluted onto an ELISA plate coated with a recombinant protein fragment.

## Publications

Garrison C, Lastwika K, Zhang Y et al. Proteomic Analysis, Immune Dysregulation and Pathway Interconnections with Obesity. *Journal of Proteome Research* Oct 21 2016 12:00AM [PMID: 27769113] (MiAr)

Details:  
IMP2/IGF2BP2 Antibody used in microarray creation

Rho JH, Lampe PD. High-throughput screening for native autoantigen-autoantibody complexes using antibody microarrays. *Journal of Proteome Research* May 3 2014 12:00AM [PMID: 23541305] (MiAr)

Details:  
Anti-IMP2/IGF2BP2 used in screening array



### **Novus Biologicals USA**

8100 Southpark Way, A-8  
Littleton, CO 80120  
USA

Phone: 303.730.1950  
Toll Free: 1.888.506.6887  
Fax: 303.730.1966  
novus@novusbio.com

### **Novus Biologicals Canada**

461 North Service Road West, Unit B37  
Oakville, ON L6M 2V5  
Canada

Phone: 905.827.6400  
Toll Free: 855.668.8722  
Fax: 905.827.6402  
canada@novusbio.com

### **Novus Biologicals Europe**

19 Barton Lane  
Abingdon Science Park  
Abingdon, OX14 3NB, United Kingdom

Phone: (44) (0) 1235 529449  
Free Phone: 0800 37 34 15  
Fax: (44) (0) 1235 533420  
info@bio-techne.com

### **General Contact Information**

www.novusbio.com  
Technical Support: technical@novusbio.com  
Orders: orders@novusbio.com  
General: novus@novusbio.com

### **Limitations**

This product is for research use only and is not approved for use in humans or in clinical diagnosis. Primary Antibodies are guaranteed for 1 year from date of receipt.

For more information on our 100% guarantee, please visit [www.novusbio.com/guarantee](http://www.novusbio.com/guarantee)

Earn gift cards/discounts by submitting a review: [www.novusbio.com/reviews/submit/23750002](http://www.novusbio.com/reviews/submit/23750002)

Earn gift cards/discounts by submitting a publication using this product:  
[www.novusbio.com/publications](http://www.novusbio.com/publications)

