

Product Datasheet

AKT1 Antibody 22140002

Unit Size: 0.05 mg

Store at 4C short term. Aliquot and store at -20C long term. Avoid freeze-thaw cycles.

www.novusbio.com



technical@novusbio.com

Publications: 2

Protocols, Publications, Related Products, Reviews, Research Tools and Images at:
www.novusbio.com/22140002

Updated 9/9/2019 v.20.1

Earn rewards for product
reviews and publications.

Submit a publication at www.novusbio.com/publications

Submit a review at www.novusbio.com/reviews/destination/22140002



22140002**AKT1 Antibody**

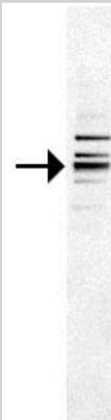
Product Information	
Unit Size	0.05 mg
Concentration	Please see the vial label for concentration. If unlisted please contact technical services.
Storage	Store at 4C short term. Aliquot and store at -20C long term. Avoid freeze-thaw cycles.
Clonality	Polyclonal
Preservative	No Preservative
Isotype	IgG
Purity	Immunogen affinity purified
Buffer	20mM Potassium Phosphate (pH 7.0) and 0.15M NaCl
Target Molecular Weight	55.7 kDa

Product Description	
Host	Rabbit
Gene ID	207
Gene Symbol	AKT1
Species	Human
Reactivity Notes	Human.
Specificity/Sensitivity	This product is specific for Human AKT1.
Immunogen	This antibody is specific for the C Terminus Region of the target protein.
Notes	Manufactured by SDIX's proprietary Genomic Antibody Technology™. GAT FAQs .

Product Application Details	
Applications	Western Blot, Dot Blot, ELISA
Recommended Dilutions	Western Blot 1:5000-1:20000, ELISA 1:100-1:2000, Dot Blot 1:100-1:2000
Application Notes	This antibody is useful in ELISA and Western Blot.

Images

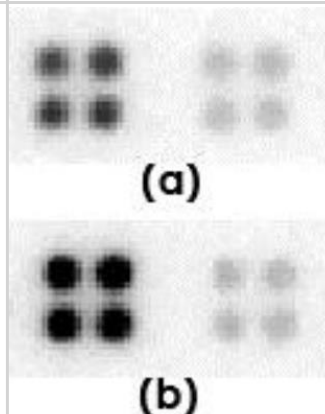
Western Blot: Akt1 Antibody [22140002] - Cell lysate from HeLa cells were subjected to SDS-PAGE and transfer to nitrocellulose membrane. The membrane was incubated with anti-Akt1 antibody (1:1000 dilution) and then probed anti-rabbit IgG-HRP. Signals were acquired with a CCD camera. Arrow points to unmodified Akt1 . The two bands above the arrow are probably post-translational modified AKT1. Data courtesy of a SDI customer.



Western Blot: Akt1 Antibody [22140002] - Affinity purified SEQer Akt1 antibody, aa(389-474) antibody. The lanes contain 5-30ug of a whole cell extract. The protein was detected as represented by the band shown.

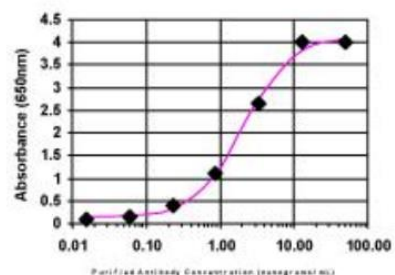


Dot Blot: Akt1 Antibody [22140002] - The anti-Akt1 antibody (Left quadruplicate spots at each panel) or control antibody (right quadruplicate spots at each panel) were printed on membranes at 10 ng/spot. The membranes were incubated with biotinylated cell lysate (50 ug per membrane), followed by probing with streptavidin-HRP and CCD camera image acquisition. (a), Cell lysate from undifferentiated mouse embryonic stem cells; (b), Cell lysate from differentiated mouse embryonic stem cells. Data courtesy of a SDI customer.



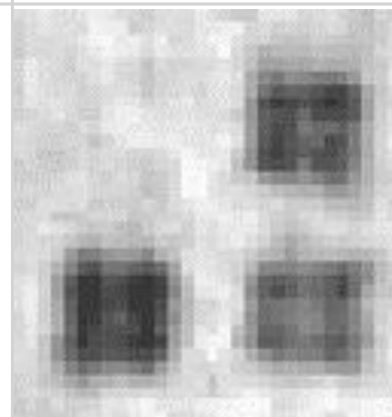
ELISA: Akt1 Antibody [22140002]

ELISA:



The affinity purified antibody was serially diluted onto an ELISA plate coated with a recombinant protein fragment.

Dot Blot: AKT1 Antibody [22140002] - Protein samples (upper left quadruplicate spots: bovine gamma globulin; upper right quadruplicate spots: cell lysate from 293 cell over expressing Nanog; below left quadruplicate spots: cell lysate from 293 cell over expressing Sox2; below right quadruplicate spots: cell lysate from 293 cell over expressing POU5F1) were printed on membranes at 10 ng/spot. The membrane was incubated with anti-AKT antibody (1:1000 dilution) and then probed anti-rabbit IgG-HRP. Signals were acquired with a CCD camera. Data courtesy of a SDI customer.



Publications

Garrison C, Lastwika K, Zhang Y et al. Proteomic Analysis, Immune Dysregulation and Pathway Interconnections with Obesity. Journal of Proteome Research Oct 21 2016 12:00AM [PMID: 27769113] (MiAr)

Details:

Akt1 Antibody used in microarray creation

Rho JH, Lampe PD. High-throughput screening for native autoantigen-autoantibody complexes using antibody microarrays. Journal of Proteome Research May 3 2014 12:00AM [PMID: 23541305] (MiAr)

Details:

Anti-Akt1 used in screening array





Novus Biologicals USA

10730 E. Briarwood Avenue
Centennial, CO 80112
USA

Phone: 303.730.1950
Toll Free: 1.888.506.6887
Fax: 303.730.1966
novus@novusbio.com

Novus Biologicals Canada

461 North Service Road West, Unit B37
Oakville, ON L6M 2V5
Canada

Phone: 905.827.6400
Toll Free: 855.668.8722
Fax: 905.827.6402
canada@novusbio.com

Novus Biologicals Europe

19 Barton Lane
Abingdon Science Park
Abingdon, OX14 3NB, United Kingdom

Phone: (44) (0) 1235 529449
Free Phone: 0800 37 34 15
Fax: (44) (0) 1235 533420
info@bio-techne.com

General Contact Information

www.novusbio.com
Technical Support: technical@novusbio.com
Orders: orders@novusbio.com
General: novus@novusbio.com

Limitations

This product is for research use only and is not approved for use in humans or in clinical diagnosis. Primary Antibodies are guaranteed for 1 year from date of receipt.

For more information on our 100% guarantee, please visit www.novusbio.com/guarantee

Earn gift cards/discounts by submitting a review: www.novusbio.com/reviews/submit/22140002

Earn gift cards/discounts by submitting a publication using this product:
www.novusbio.com/publications

