

# Product Datasheet

## LOC387761 Antibody 21440002

Unit Size: 0.05 mg

Store at 4C short term. Aliquot and store at -20C long term. Avoid freeze-thaw cycles.

[www.novusbio.com](http://www.novusbio.com)



[technical@novusbio.com](mailto:technical@novusbio.com)

### Publications: 2

Protocols, Publications, Related Products, Reviews, Research Tools and Images at:  
[www.novusbio.com/21440002](http://www.novusbio.com/21440002)

Updated 2/22/2019 v.20.1

Earn rewards for product  
reviews and publications.

Submit a publication at [www.novusbio.com/publications](http://www.novusbio.com/publications)

Submit a review at [www.novusbio.com/reviews/destination/21440002](http://www.novusbio.com/reviews/destination/21440002)



**21440002****LOC387761 Antibody**

<b>Product Information</b>	
<b>Unit Size</b>	0.05 mg
<b>Concentration</b>	Please see the vial label for concentration. If unlisted please contact technical services.
<b>Storage</b>	Store at 4C short term. Aliquot and store at -20C long term. Avoid freeze-thaw cycles.
<b>Clonality</b>	Polyclonal
<b>Preservative</b>	No Preservative
<b>Isotype</b>	IgG
<b>Purity</b>	Immunogen affinity purified
<b>Buffer</b>	20mM Potassium Phosphate (pH 7.0) and 0.15M NaCl

<b>Product Description</b>	
<b>Host</b>	Rabbit
<b>Gene ID</b>	387761
<b>Gene Symbol</b>	LOC387761
<b>Species</b>	Human
<b>Reactivity Notes</b>	Human.
<b>Specificity/Sensitivity</b>	This product is specific for Human loc387761.
<b>Immunogen</b>	In vivo generated recombinant protein fragment
<b>Notes</b>	Manufactured by SDIX's proprietary Genomic Antibody Technology <sup>®</sup> ; GAT <a href="#">FAQs</a> .

<b>Product Application Details</b>	
<b>Applications</b>	Western Blot, ELISA
<b>Recommended Dilutions</b>	Western Blot 1:5000-1:20000, ELISA 1:100-1:2000
<b>Application Notes</b>	This antibody is useful in ELISA and Western Blot.



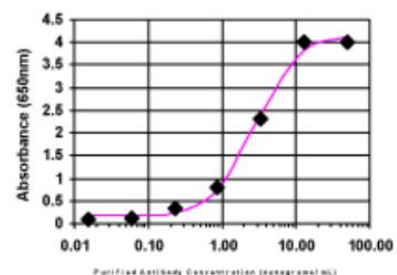
## Images

Western Blot: LOC387761 Antibody [21440002] - Western Blot was performed using affinity purified SEQer loc387761 antibody, aa(62-151) antibody. The lanes contain 5-30ug of a whole cell extract. Final concentration of antibodies = 0.1ug/ml (1:10,000 dilution). The blot was probed overnight with the SEQer loc387761 antibody, aa(62-151) antibody. Blot was then washed according to protocol and probed with goat-anti-Rabbit-HRP conjugate at 1:5000 dilution, washed and developed using chemiluminescence (film exposure 5-30sec). The protein was detected as represented by the band shown.



ELISA: LOC387761 Antibody [21440002]

### ELISA:



The affinity purified antibody was serially diluted onto an ELISA plate coated with a recombinant protein fragment.

## Publications

Garrison C, Lastwika K, Zhang Y et al. Proteomic Analysis, Immune Dysregulation and Pathway Interconnections with Obesity. Journal of Proteome Research Oct 21 2016 12:00AM [PMID: 27769113] (MiAr)

### Details:

LOC387761 Antibody used in microarray creation

Rho JH, Lampe PD. High-throughput screening for native autoantigen-autoantibody complexes using antibody microarrays. Journal of Proteome Research May 3 2014 12:00AM [PMID: 23541305] (MiAr)

### Details:

Anti-LOC387761 used in screening array



### **Novus Biologicals USA**

10730 E. Briarwood Avenue  
Centennial, CO 80112  
USA

Phone: 303.730.1950  
Toll Free: 1.888.506.6887  
Fax: 303.730.1966  
novus@novusbio.com

### **Novus Biologicals Canada**

461 North Service Road West, Unit B37  
Oakville, ON L6M 2V5  
Canada

Phone: 905.827.6400  
Toll Free: 855.668.8722  
Fax: 905.827.6402  
canada@novusbio.com

### **Novus Biologicals Europe**

19 Barton Lane  
Abingdon Science Park  
Abingdon, OX14 3NB, United Kingdom  
Phone: (44) (0) 1235 529449  
Free Phone: 0800 37 34 15  
Fax: (44) (0) 1235 533420  
info@bio-techne.com

### **General Contact Information**

www.novusbio.com  
Technical Support: technical@novusbio.com  
Orders: orders@novusbio.com  
General: novus@novusbio.com

### **Limitations**

This product is for research use only and is not approved for use in humans or in clinical diagnosis. Primary Antibodies are guaranteed for 1 year from date of receipt.

For more information on our 100% guarantee, please visit [www.novusbio.com/guarantee](http://www.novusbio.com/guarantee)

Earn gift cards/discounts by submitting a review: [www.novusbio.com/reviews/submit/21440002](http://www.novusbio.com/reviews/submit/21440002)

Earn gift cards/discounts by submitting a publication using this product:  
[www.novusbio.com/publications](http://www.novusbio.com/publications)

