

# Product Datasheet

## CCL2/MCP1 Antibody 20530002

Unit Size: 0.05 mg

Store at 4C short term. Aliquot and store at -20C long term. Avoid freeze-thaw cycles.

[www.novusbio.com](http://www.novusbio.com)



[technical@novusbio.com](mailto:technical@novusbio.com)

### Publications: 3

Protocols, Publications, Related Products, Reviews, Research Tools and Images at:  
[www.novusbio.com/20530002](http://www.novusbio.com/20530002)

Updated 8/21/2017 v.20.1

Earn rewards for product  
reviews and publications.

Submit a publication at [www.novusbio.com/publications](http://www.novusbio.com/publications)

Submit a review at [www.novusbio.com/reviews/destination/20530002](http://www.novusbio.com/reviews/destination/20530002)



**20530002****CCL2/MCP1 Antibody**

| <b>Product Information</b> |   |
|----------------------------|---|
| <b>Unit Size</b>           | 0.05 mg   |
| <b>Concentration</b>       | Please see the vial label for concentration. If unlisted please contact technical services. |
| <b>Storage</b>             | Store at 4C short term. Aliquot and store at -20C long term. Avoid freeze-thaw cycles.      |
| <b>Clonality</b>           | Polyclonal  |
| <b>Preservative</b>        | No Preservative   |
| <b>Isotype</b>             | IgG   |
| <b>Purity</b>              | Immunogen affinity purified   |
| <b>Buffer</b>              | 20mM Potassium Phosphate (pH 7.0) and 0.15M NaCl  |

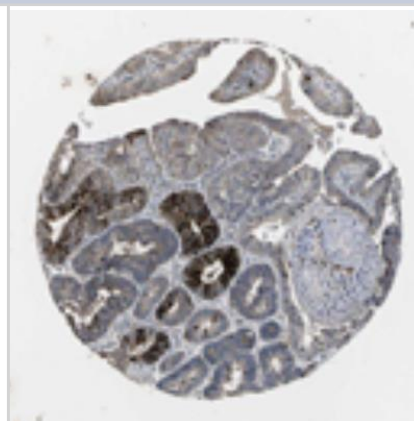
| <b>Product Description</b>     |  |
|--------------------------------|--|
| <b>Host</b>                    | Rabbit   |
| <b>Gene ID</b>                 | 6347   |
| <b>Gene Symbol</b>             | CCL2   |
| <b>Species</b>                 | Human  |
| <b>Reactivity Notes</b>        | Human.   |
| <b>Specificity/Sensitivity</b> | This product is specific for Human CCL2.   |
| <b>Immunogen</b>               | This antibody is specific for the entire range of the target protein.                        |
| <b>Notes</b>                   | Manufactured by SDIX's proprietary Genomic Antibody Technology™;. GAT <a href="#">FAQs</a> . |

| <b>Product Application Details</b> |   |
|------------------------------------|---|
| <b>Applications</b>                | ELISA, Immunohistochemistry, Immunohistochemistry-Paraffin                                    |
| <b>Recommended Dilutions</b>       | ELISA 1:100-1:2000, Immunohistochemistry 1:10-1:500, Immunohistochemistry-Paraffin 1:10-1:500 |
| <b>Application Notes</b>           | This antibody is useful in ELISA and Immunohistochemistry-Paraffin.                           |



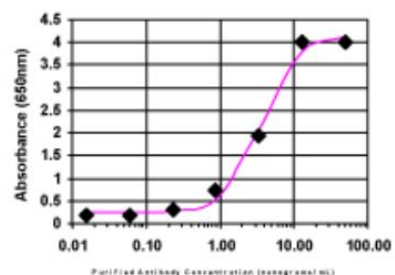
## Images

Immunohistochemistry: CCL2/MCP1 Antibody [20530002] - Strong cytoplasmic positivity with additional staining of luminal membranes was seen in mucus-producing cells of the gastro-intestinal tract. Cells of the CNS and lymphoid tissues were in general negative, except for mast cells, which were strongly positive. In malignant tissues, mucin secreting colo-rectal carcinomas and mucinous cystadenocarcinomas of ovary exhibited strong cytoplasmic staining with additional positivity of luminal membranes. Few other adenocarcinomas were strongly stained in cytoplasm. Malignant gliomas, lymphomas and renal cancers were mainly negative. Image and statement courtesy of the Human Protein Atlas (HPA).



ELISA: CCL2/MCP1 Antibody [20530002]

ELISA:



The affinity purified antibody was serially diluted onto an ELISA plate coated with a recombinant protein fragment.

## Publications

Garrison C, Lastwika K, Zhang Y et al. Proteomic Analysis, Immune Dysregulation and Pathway Interconnections with Obesity. *Journal of Proteome Research* Oct 21 2016 12:00AM [PMID: 27769113] (MiAr)

Details:

CCL2/MCP1 Antibody used in microarray creation

Rho JH, Lampe PD. High-throughput screening for native autoantigen-autoantibody complexes using antibody microarrays. *Journal of Proteome Research* May 3 2014 12:00AM [PMID: 23541305] (MiAr)

Details:

Anti-CCL2/MCP1 used in screening array

Vergani E, Di Guardo L, Dugo M et al. Overcoming melanoma resistance to vemurafenib by targeting CCL2-induced miR-34a, miR-100 and miR-125b. *Oncotarget* 2016 Jan 26 [PMID: 26684239] (FLOW)



### **Novus Biologicals USA**

10730 E. Briarwood Avenue  
Centennial, CO 80112  
USA

Phone: 303.730.1950  
Toll Free: 1.888.506.6887  
Fax: 303.730.1966  
novus@novusbio.com

### **Novus Biologicals Canada**

461 North Service Road West, Unit B37  
Oakville, ON L6M 2V5  
Canada

Phone: 905.827.6400  
Toll Free: 855.668.8722  
Fax: 905.827.6402  
canada@novusbio.com

### **Novus Biologicals Europe**

19 Barton Lane  
Abingdon Science Park  
Abingdon, OX14 3NB, United Kingdom

Phone: (44) (0) 1235 529449  
Free Phone: 0800 37 34 15  
Fax: (44) (0) 1235 533420  
info@bio-techne.com

### **General Contact Information**

www.novusbio.com  
Technical Support: technical@novusbio.com  
Orders: orders@novusbio.com  
General: novus@novusbio.com

### **Limitations**

This product is for research use only and is not approved for use in humans or in clinical diagnosis. Primary Antibodies are guaranteed for 1 year from date of receipt.

For more information on our 100% guarantee, please visit [www.novusbio.com/guarantee](http://www.novusbio.com/guarantee)

Earn gift cards/discounts by submitting a review: [www.novusbio.com/reviews/submit/20530002](http://www.novusbio.com/reviews/submit/20530002)

Earn gift cards/discounts by submitting a publication using this product:  
[www.novusbio.com/publications](http://www.novusbio.com/publications)

