

Product Datasheet

ErbB2/Her2 Antibody 17000002

Unit Size: 0.05 mg

Store at 4C short term. Aliquot and store at -20C long term. Avoid freeze-thaw cycles.

www.novusbio.com



technical@novusbio.com

Publications: 2

Protocols, Publications, Related Products, Reviews, Research Tools and Images at:
www.novusbio.com/17000002

Updated 7/2/2018 v.20.1

Earn rewards for product
reviews and publications.

Submit a publication at www.novusbio.com/publications

Submit a review at www.novusbio.com/reviews/destination/17000002



17000002

ErbB2/Her2 Antibody

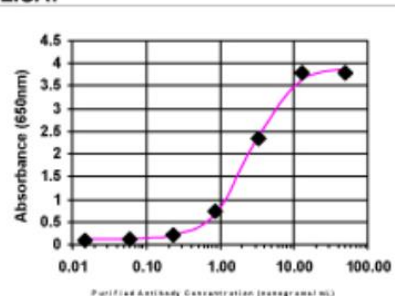
| Product Information | |
|---------------------|---------------------------------------------------------------------------------------------|
| Unit Size | 0.05 mg |
| Concentration | Please see the vial label for concentration. If unlisted please contact technical services. |
| Storage | Store at 4C short term. Aliquot and store at -20C long term. Avoid freeze-thaw cycles. |
| Clonality | Polyclonal |
| Preservative | No Preservative |
| Isotype | IgG |
| Purity | Immunogen affinity purified |
| Buffer | 20mM Potassium Phosphate (pH 7.0) and 0.15M NaCl |

| Product Description | |
|-------------------------|---------------------------------------------------------------------------------------------|
| Host | Rabbit |
| Gene ID | 2064 |
| Gene Symbol | ERBB2 |
| Species | Human |
| Reactivity Notes | Human. |
| Specificity/Sensitivity | This product is specific for Human ErbB2/HER2. |
| Immunogen | This antibody is specific for the C Terminus Region of the target protein. |
| Notes | Manufactured by SDIX's proprietary Genomic Antibody Technology™; GAT FAQs . |

| Product Application Details | |
|-----------------------------|------------------------------------------------------------------------------------------------------------------------------|
| Applications | Western Blot, ELISA, Immunohistochemistry, Immunohistochemistry-Paraffin |
| Recommended Dilutions | Western Blot 1:5000-1:20000, ELISA 1:100-1:2000, Immunohistochemistry 1:10-1:500, Immunohistochemistry-Paraffin 1:250-1:2000 |
| Application Notes | This antibody is useful in ELISA, Western Blot and Immunohistochemistry-Paraffin. |

Images

ELISA: ErbB2/HER2 Antibody [17000002]

ELISA:

The affinity purified antibody was serially diluted onto an ELISA plate coated with a recombinant protein fragment.

Publications

Garrison C, Lastwika K, Zhang Y et al. Proteomic Analysis, Immune Dysregulation and Pathway Interconnections with Obesity. Journal of Proteome Research Oct 21 2016 12:00AM [PMID: 27769113] (MiAr)

Details:

ErbB2/Her2 Antibody used in microarray creation

Rho JH, Lampe PD. High-throughput screening for native autoantigen-autoantibody complexes using antibody microarrays. Journal of Proteome Research May 3 2014 12:00AM [PMID: 23541305] (MiAr)

Details:

Anti-ErbB2/Her2 used in screening array





Novus Biologicals USA

8100 Southpark Way, A-8
Littleton, CO 80120
USA

Phone: 303.730.1950
Toll Free: 1.888.506.6887
Fax: 303.730.1966
novus@novusbio.com

Novus Biologicals Canada

461 North Service Road West, Unit B37
Oakville, ON L6M 2V5
Canada

Phone: 905.827.6400
Toll Free: 855.668.8722
Fax: 905.827.6402
canada@novusbio.com

Novus Biologicals Europe

19 Barton Lane
Abingdon Science Park
Abingdon, OX14 3NB, United Kingdom

Phone: (44) (0) 1235 529449
Free Phone: 0800 37 34 15
Fax: (44) (0) 1235 533420
info@bio-techne.com

General Contact Information

www.novusbio.com
Technical Support: technical@novusbio.com
Orders: orders@novusbio.com
General: novus@novusbio.com

Limitations

This product is for research use only and is not approved for use in humans or in clinical diagnosis. Primary Antibodies are guaranteed for 1 year from date of receipt.

For more information on our 100% guarantee, please visit www.novusbio.com/guarantee

Earn gift cards/discounts by submitting a review: www.novusbio.com/reviews/submit/17000002

Earn gift cards/discounts by submitting a publication using this product:
www.novusbio.com/publications

